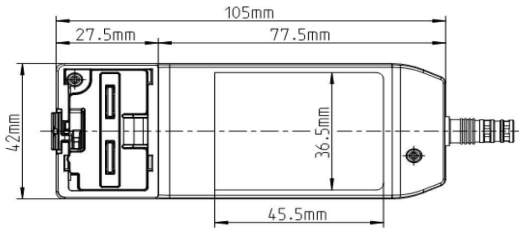


C-LIO-1SN05-1,8M-DIN4-GPN.R001



*picture only for reference

Dimensions

- Length 105mm
- Width 42mm
- Height 37mm

Battery

- Lithium Ion 1 cell
- Thermistor 10k
- $\beta=3980$ to batt. Neg.

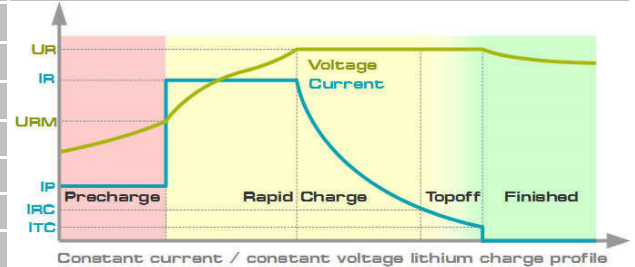
Mechanical Features

- Compact wall plug-in housing
- Output plug Mini-Din 4 pole
- Protection Class 2
- Changeable input plug for worldwide use
- For indoor use only

State of charge	LED	Charge profile
Charge pending	Amber	<ul style="list-style-type: none"> • Manufacturer recommended CC/CV • Low voltage / temperature Precharge • Topoff mode, Safety timers, Temperature monitoring
Precharge	Amber 0,5s on 0,5s off	
Rapid charge	Green 0,5s on 0,5s off	
Charge finished & topoff	Green	
Fault	Red	

Pin layout

Mini-Din 4 pole		Pin1 NTC
		Pin2 Plus
		Pin3 GND
		Pin4 not connected



Input Parameters		Output Parameters		
Input voltage	90 - 264 V	Output power	max 12 W	
Input current	9 - 620 mA	Output voltage	min. 4,11V	max. 4,19V
Input frequency	47 - 63 Hz	Output current	min. 0,15A	max. 0,55A
Efficiency	typ. 87%			

Environmental

Operating temperature	min. 0°C	max. 40°C
Storage temperature	min. -30°C	max. 80°C
Humidity	max. 95%	

